

Kim, Youn-Jong · Song, Chul-Ho · Won, Jong-Seok

While occasional disasters have occurred recently in urban facilities such as bridges, buildings, subways, roads and others, the systematic safety management of urban facilities is greatly needed to prevent the disaster or to minimize the damages. This study proposes the way of setting-up and managing an building disaster information system so that this experience can be applied to other urban facilities to minimize trials and errors.

With such a purpose, this study presents a building safety management information system and utilizes it for the building disaster information system. This study includes research agendas as follows : building maintenance and management information system, setting-up and utilization the building safety management information system, building disaster information system.

The results suggest that the building safety management information system which can be related to the urban disaster information system should be constructed in advance in order to utilize the building disaster information system, and that, under this condition, it proved to be easily connected to the related database.

The schemes or devices for practical usage should be supplemented through a standardization and a pilot project in central government or Seoul Metropolitan Government level in order to set up and utilize the building safety management information system, and the related laws or regulations should be prepared or amended to support the system.

*
 **

가

, 가

가

ISO

가

가

가

 $\langle 1 \rangle$

가

< 2>
, 가, ,

. ,

.

.

.

가 .

(3)

가 .

,

< 2> .

.

, .

, ,

.

가

.
< 3>

.

(2.3%), (6.5%),

		， ， ， ，
		， ， ， ，

< 2>

， ，

2.

가 .

， ， (1)

가 .

， (

， 1997).

「 」

，

가 ，

	1. , 2. , 3. , 4. , 5. , 6.
	1. , 2. , 3. , 4.
	1. , 2. , 3. , 4. , 5. , 6.
	1. , 2. , 3. , 4. , 5. , 6.
	1. , 2. , 3. , 4.
	1. , 2. , 3. , 4.
	1. , 2. , 3. , 4. , 5. , 6. , 7.
	1. , 2. , 3.
	1. , 2. , 3.
	1. , 2. , 3.

< 3>

10가
· < 3> ,
· ,
· ,
· (, 1996).
(3) .

가가

· ,
·
·
·
·
· (1)
· 41
· < 4> 「 」
7 · , ,
· ,
3. < 5> .

(2)

		1
		90
	가	
	가 가	3 1 가
		10 1 · 2 5 1

< 5>

	1. , 2. , 3. , 4. , 5. ,6.
.	1. ,2. ,3. , 4. , 5. , 6.
.	1. ,2. .

< 6>

10

(, ,

1996). ,

, (

,1987).

가) 10

10

.

.

.

가 .

1.)

, , 가 ,

가

(tree)

.

가 .

.

가

.

(1))

가 , 가 .
가 .
(2)
가 ISO TC 59/SC13/WG2

	(Facilities),	(Spaces),	
	(Elements),	(Work sections),	
.	(Construction products),		
	(Construction aids)	6	
		(Management)	
)	(Attributes)	2	8

가
가 .
 . 1950 SfB(Sa-
)

가
.

)
가
가 가

)

marbetskommittén för Byggnadsfrågor, -----

1)

SfB :

UK WPDC:

MASTERFORMAT:

ISO TR14177:

SfB(1973)	BIC(1969)	MASTERFORMAT(1987)
<ul style="list-style-type: none"> - Elements - Constructions (e.g. blockwork) - Resources (e.g. labour, materials) 	<ul style="list-style-type: none"> - Project type/division - Space use - Element - Feature - Feature category 	<ul style="list-style-type: none"> - General requirements - Site & civil constructions - Concrete, - Masonry, - Metals - Wood and plastic - Moisture and thermal protection - Doors and windows - Finishes, - Specialties - Building equipment - Furniture, furnishings and equipment - Process systems and equipment - Conveying systems - Mechanical, - Electrical
CI/SfB(1978)		
<ul style="list-style-type: none"> - Buildings - Elements - Form of Construction - Materials - Authorities requirements 		
NATSPEC Classification(1975)	BSAB(1972)	ISO TR14177(1994)
<ul style="list-style-type: none"> - Preliminaries - Materials and workmanship - Building trades - Structure, - Envelope - Finishes and decoration - Fixtures and furniture - Service system - Construction systems 	<ul style="list-style-type: none"> - Building work (e.g. by assembly type) - Elements - Commodities (e.g. materials) 	<ul style="list-style-type: none"> - Building and other facilities - Spaces, - Elements - Work sections - Construction products - Construction aids - Management - Attributes
UK WPDC(1972)	CIT(1976)	Plowden
<ul style="list-style-type: none"> - Commodities - Cost planning units - Construction planning units - Work section - Construction processes 	<ul style="list-style-type: none"> - Physical forms of presentation - Peripheral subjects - Time, - Place - Properties - Agents of construction - Operations and processes - Materials - Parts of construction works - Construction works 	<ul style="list-style-type: none"> - Building types - Elements - Products / materials - Fixing / plant / accessories - Work sections - Pervasive factors - Office management
BRS(1969)	BSAB(1983)	BSAB(1996)
<ul style="list-style-type: none"> - Building type - Functional spaces & systems - Building Element - Technical solution - Commodities - Construction method - Work section - Work element - Operative occupations - Plant and equipment 	<ul style="list-style-type: none"> - structure by materials - Earthworks, buildings and elements 	<ul style="list-style-type: none"> - Facilities - Spaces - Elements - Work sections - Construction products - Attributes

< 7>

{ 4 }

，
·

2.

·

，
，

3.

(1)

·

가,

，

가 ，

，

「

」(1996)

，

·

·

< 8> .

，

<

4>

·

， ， ， ，

가

· , , , ,

< 5> 4 , ,

· 10

· , ,

< 9>

·

·

“Inspection” “I”, “Defect”

“D”, “Cause” “C”

“Treatment” “T”

·

가

(ISO)가 TC 59/SC13/WG2

SfB

·
·

,

·

	(I)	(D)	(C)	(T)
0	.			
1				
2				
3			.	
4				
5				
6				
7			.	.
8				.
9				

* : , 1997, GIS , .

< 9>

.	0	.
	1	,
	2	,
	3	, , 가
	4	
	5	
	6	가
	7	가
	8	

< 10> .

	0	
	1	, ,
	2	
	3	
	4	,
	5	, ,
	6	, ,
	7	, .
	8	, .
	9	, ,

< 11>

	0	
	1	
	2	
.	3	
	4	
	5	, ,
	6	, ,
.	7	
	8	,

< 12>

(3) (< 14>).
, , ,
(, , <
1992) , , 15> (b, 1996).

.

가 .
가
,
(, 1996).

.
, , ,
,

	0	
	1	
	2	
	3	
	4	
	5	
	6	
.	7	
.	8	.

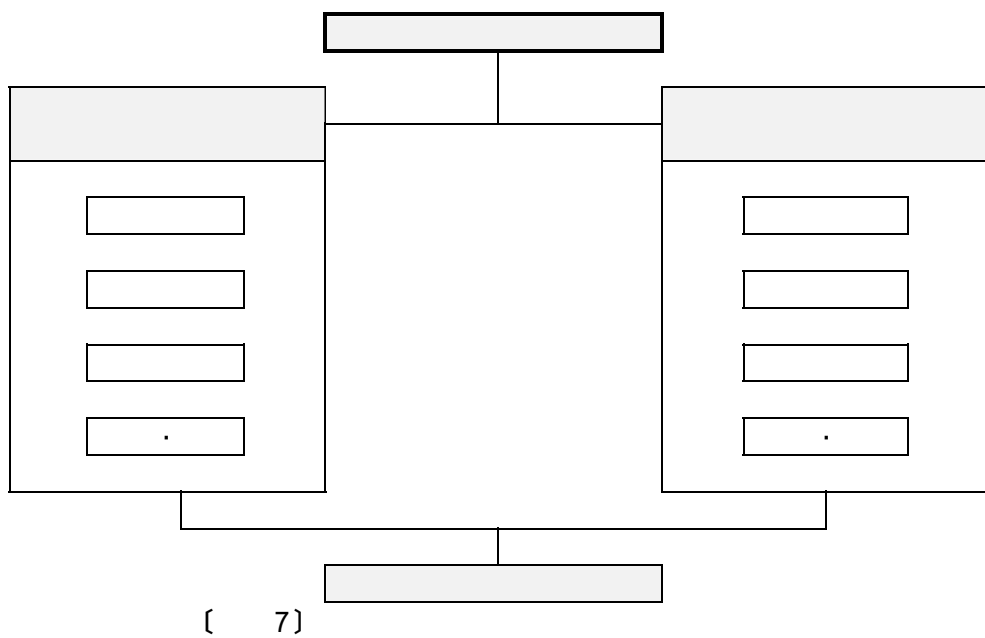
가

- (:)

:

·
(+)
, (/), (:),
(>) 4가
(
, 1996).
- (+) :
가

- (/) :



- (>)				.
I411 + I412	+	I411	I412	
I411 / I415	/	I411	I415	
I411				,
I411 : A01		I411	A01	
I171 > I175	>	I171	I175	

◀ 19> . , 1997, GIS

< 18>

(1)

가

,

,

3가

,

.

.

가

,

,

< 19>

,

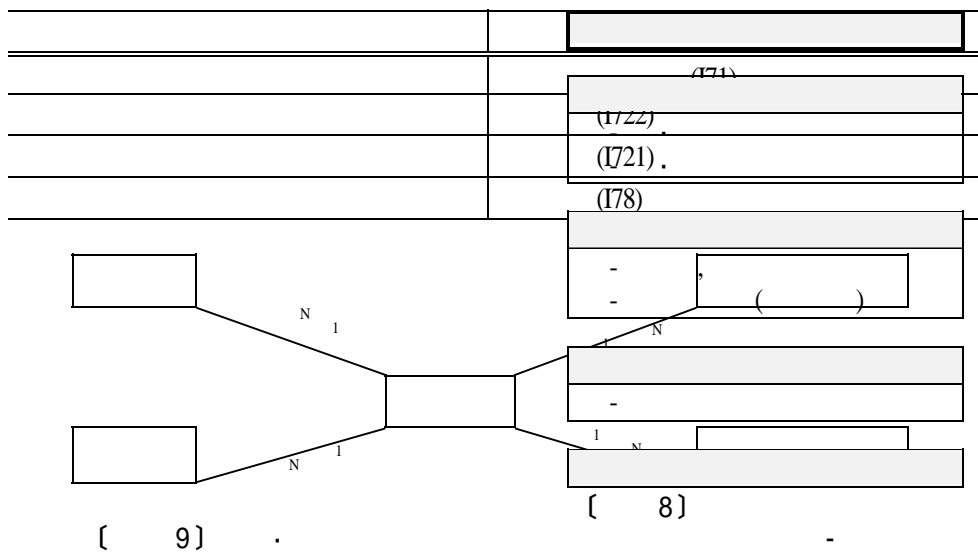
가

(

, 1997)

2.

(2)



< 20>

< 8> (3)

가

< 20> ,

< 9>

1 N .

가

.

.

가

.

,

가

,

가

.

,

가

,

.

,

,

1. , 1996, 「
」
2. , 1997, 「 가
」
3. , 1997, 「
」, : .
4. , 1992, 「
」.
5. , 1996, “
”, 「 」, 205:14-17.
6. , 1996, 「 가
」.
7. , 1996, 「
GIS
」.
8. , 1997, 「 GIS
」.
9. , 1994, 「
」, : .
10. , 1987, 「
」
11. , 1995, 「
()」.
12. a, 1996, 「
Manual」.
13. b, 1996, 「
()」.
14. , 1996, 「GIS
」.
15. , 1995, 「
」
16. Crawford, M., Cann, J., O'leary, R, 1997,
Uniclass: Unified Classification for the
Construction Industry, : RIBA
Publications.

市政研究

2

1.

, , , .

2.

1)

2)

3.

가 .

4.

, 4 30 10 30 2

5.

(1) 3 .

4-5

(02)726-1175

(2) 가 , 가
1 .

6 1 1998. 6

火葬 獎勵方案

經濟活動 僱傭政策

가

Volume 6, Number 1
June 1998

CONTENTS

A Study on Managing Listed · Wastes From SQGs in Seoul	<i>Kim, Woon-Spo Lee, Sue-Jin</i>
A Study on Evaluating Source Reduction Amounts of Food Residuals by Mass Balance Method	<i>Yoo, Kee-Young Ham, Kun-Sig</i>
Prerequisite for Recycling of Sludge from Water Treatment Plants in Seoul	<i>Cho, Yong-Mo Cho, Hang-Moon Jang, Jee-Heui</i>
Change of Norms and its Implications on Funeral Policy in Seoul	<i>Kim, Kyung-Hye</i>
Economic Participations and Employment Policies for Women	<i>Lee, Kyung-Won</i>
Improving Evaluation System for Venture Firm's Technology and Profitability in Korea	<i>Han, Yeong-Joo Sung, Hong-Mo Hong, Myeong-Pyo</i>
Management Strategies for Urban Freeway Traffic Flows in Seoul	<i>Son, Bong-Soo Kim, Tae-Hyung Kim, Sung-Min Lee, Seung-Jun</i>
Guideline for Construction of Building Safety Management Information System	<i>Kim, Youn-Jung Song, chul-Ho Won, Jong-Seok</i>

6 1 1998. 6
6 1
1998 6 11
1998 6 15

	3		·	,
	33			,
		가	가	
()	49			, ,
()	67	葬墓意識 變化	火葬 獎勵方案	
()				
()	91	經濟活動	僱傭政策	
()				
(·)	113		가	, ,
()				
	133			, ,
()				,
()	167			, ,

